



LARGE HOME SITE AVAILABLE

183rd Street & Mission Road (SWC), Stilwell, KS



SALE PRICE: \$1,350,000 | 18.3 ACRE SITE

DEMOGRAPHICS

	1 mile	3 miles	5 miles
Estimated Population	508	8,781	46,740
Avg. Household Income	\$185,969	\$158,095	\$160,090

- Perfect spot to build a custom home
- 1/3 wooded area - 2/3 prairie land
- On paved roads
- Blue Valley School District
- Estate lot development opportunity
- Ten minutes to Overland Park



CLICK HERE TO VIEW MORE
LISTING INFORMATION

For More Information Contact:

GREG ROBERTS | 816.412.7384 | groberts@blockandco.com

Exclusive Agent

LARGE HOME SITE AVAILABLE

183rd Street & Mission Road (SWC), Stilwell, KS

DRONE PHOTOS



LARGE HOME SITE AVAILABLE

183rd Street & Mission Road (SWC), Stilwell, KS

DRONE PHOTOS

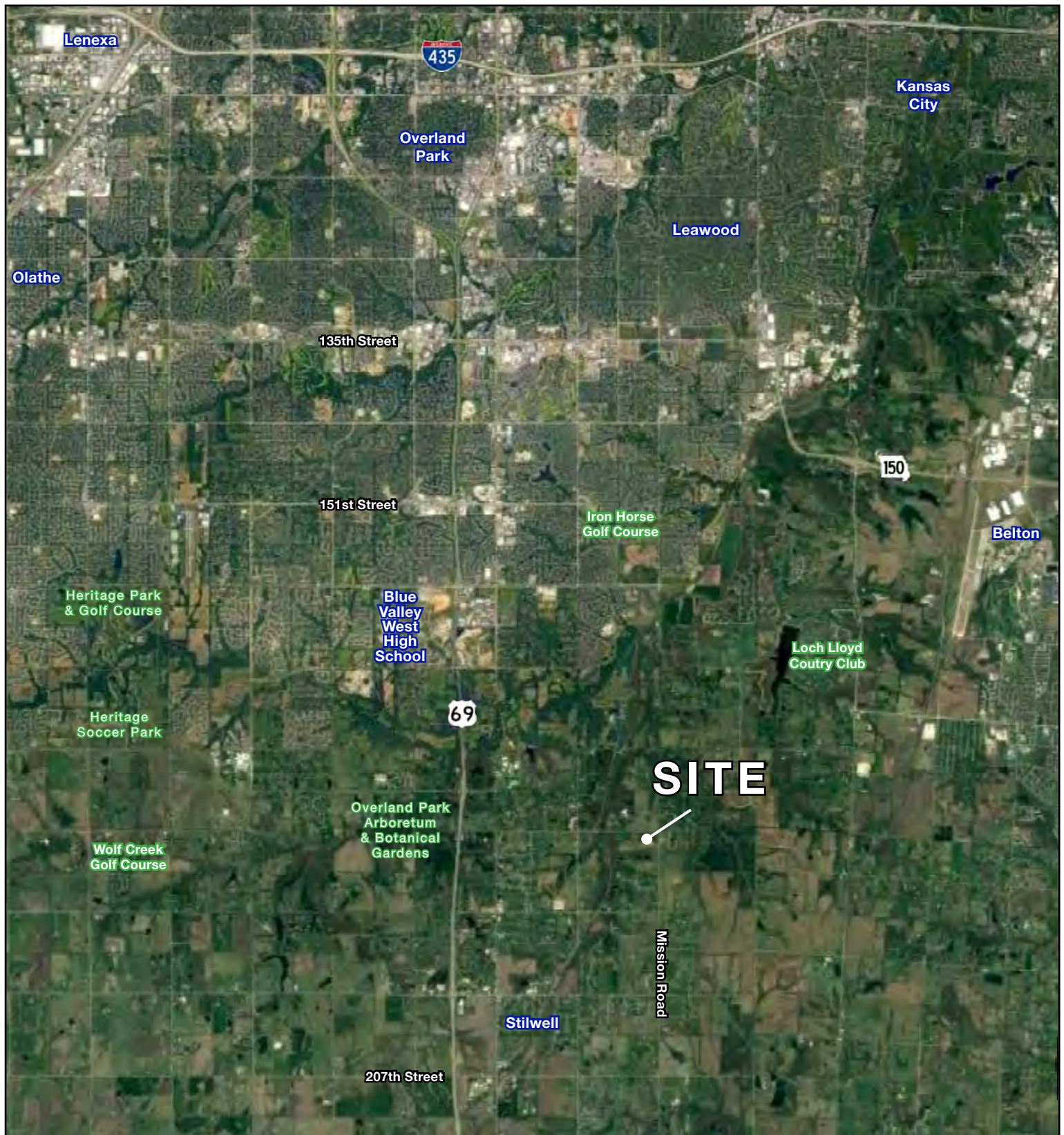




LARGE HOME SITE AVAILABLE

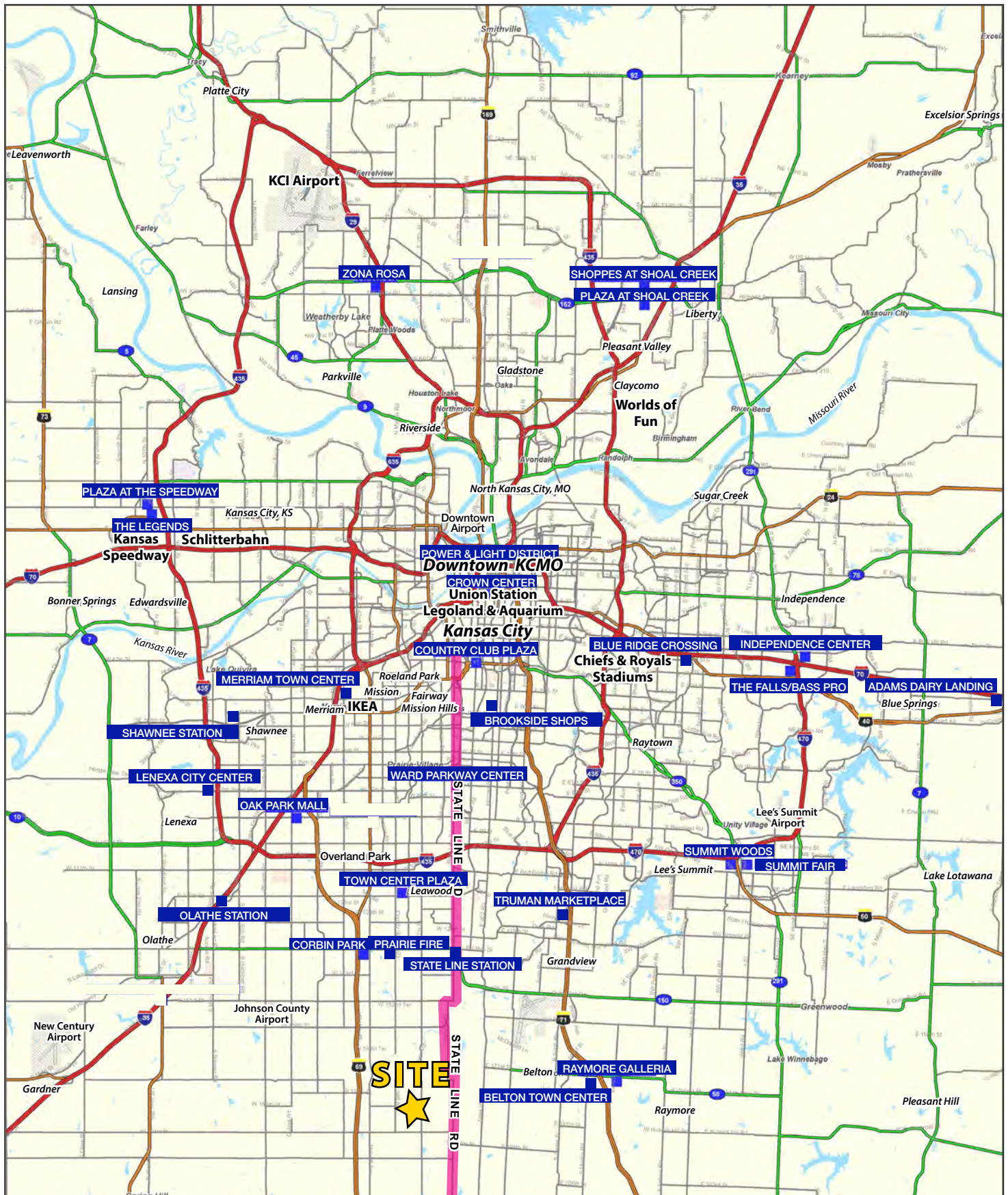
183rd Street & Mission Road (SWC), Stilwell, KS

AERIAL



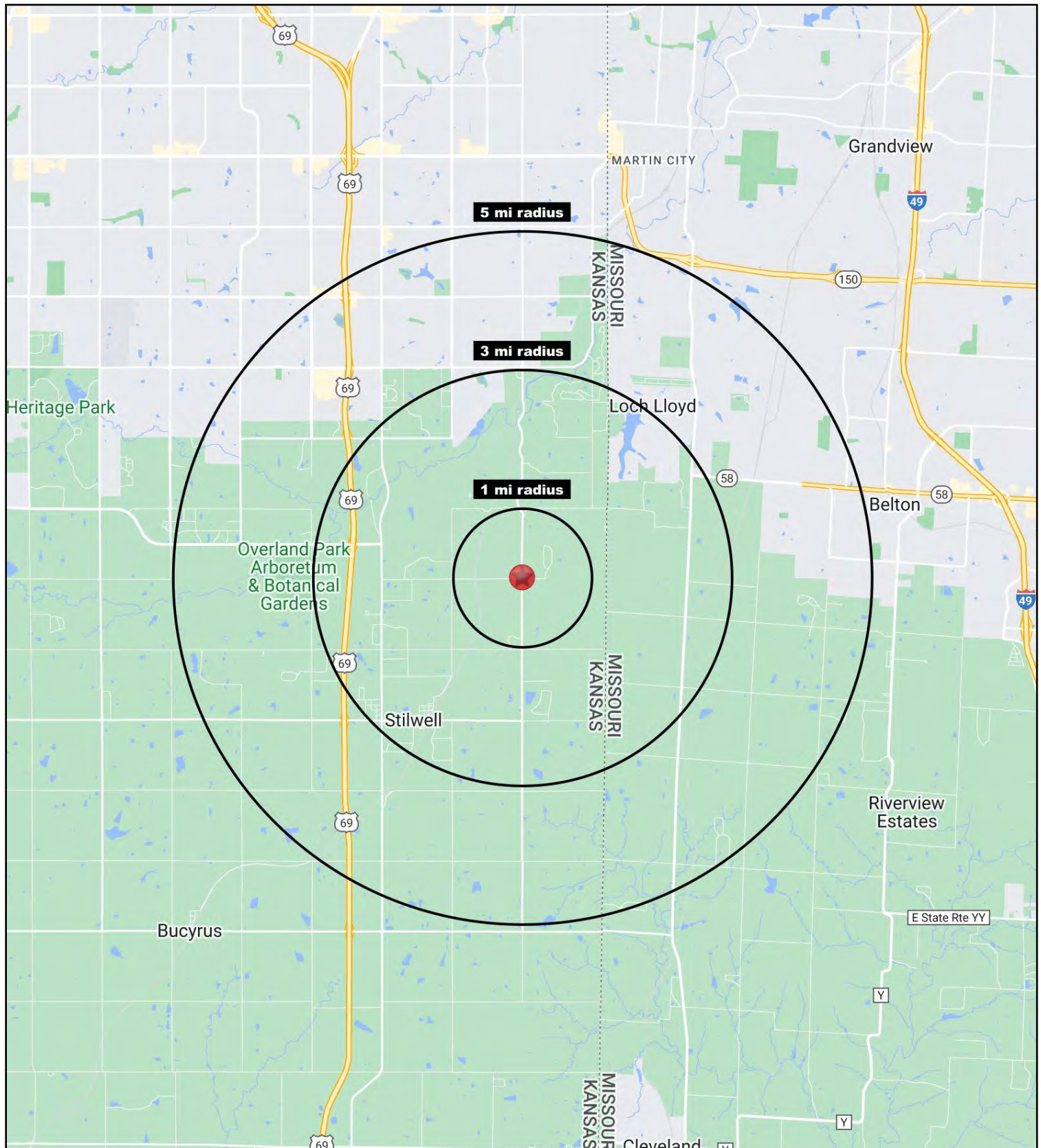
LARGE HOME SITE AVAILABLE

183rd Street & Mission Road (SWC), Stilwell, KS



LARGE HOME SITE AVAILABLE

183rd Street & Mission Road (SWC), Stilwell, KS





LARGE HOME SITE AVAILABLE

183rd Street & Mission Road (SWC), Stilwell, KS

183rd Street & Mission Road Stilwell, KS 66085	1 mi radius	3 mi radius	5 mi radius
Population			
2022 Estimated Population	508	8,781	46,740
2027 Projected Population	562	9,302	50,830
2020 Census Population	521	8,808	46,027
2010 Census Population	411	7,321	36,617
Projected Annual Growth 2022 to 2027	2.1%	1.2%	1.8%
Historical Annual Growth 2010 to 2022	2.0%	1.7%	2.3%
2022 Median Age	44.2	41.6	38.4
Households			
2022 Estimated Households	177	3,060	16,043
2027 Projected Households	197	3,287	17,597
2020 Census Households	181	3,070	15,772
2010 Census Households	143	2,535	12,567
Projected Annual Growth 2022 to 2027	2.3%	1.5%	1.9%
Historical Annual Growth 2010 to 2022	1.9%	1.7%	2.3%
Race and Ethnicity			
2022 Estimated White	90.9%	85.4%	79.0%
2022 Estimated Black or African American	1.3%	2.0%	2.9%
2022 Estimated Asian or Pacific Islander	1.3%	3.9%	8.9%
2022 Estimated American Indian or Native Alaskan	0.3%	0.2%	0.3%
2022 Estimated Other Races	6.2%	8.5%	8.9%
2022 Estimated Hispanic	3.2%	5.1%	5.1%
Income			
2022 Estimated Average Household Income	\$185,969	\$158,095	\$160,090
2022 Estimated Median Household Income	\$148,863	\$135,187	\$143,444
2022 Estimated Per Capita Income	\$64,659	\$55,119	\$54,969
Education (Age 25+)			
2022 Estimated Elementary (Grade Level 0 to 8)	0.2%	0.3%	0.8%
2022 Estimated Some High School (Grade Level 9 to 11)	2.0%	1.6%	1.5%
2022 Estimated High School Graduate	17.9%	17.1%	14.9%
2022 Estimated Some College	23.1%	19.7%	17.6%
2022 Estimated Associates Degree Only	8.2%	7.1%	7.5%
2022 Estimated Bachelors Degree Only	37.0%	33.0%	34.7%
2022 Estimated Graduate Degree	11.6%	21.2%	23.0%
Business			
2022 Estimated Total Businesses	4	199	1,308
2022 Estimated Total Employees	27	1,407	10,739
2022 Estimated Employee Population per Business	6.8	7.1	8.2
2022 Estimated Residential Population per Business	127.9	44.0	35.7

©2022, Sites USA, Chandler, Arizona, 480-491-1112 Demographic Source: Applied Geographic Solutions 6/2022, TIGER Geography - RS1